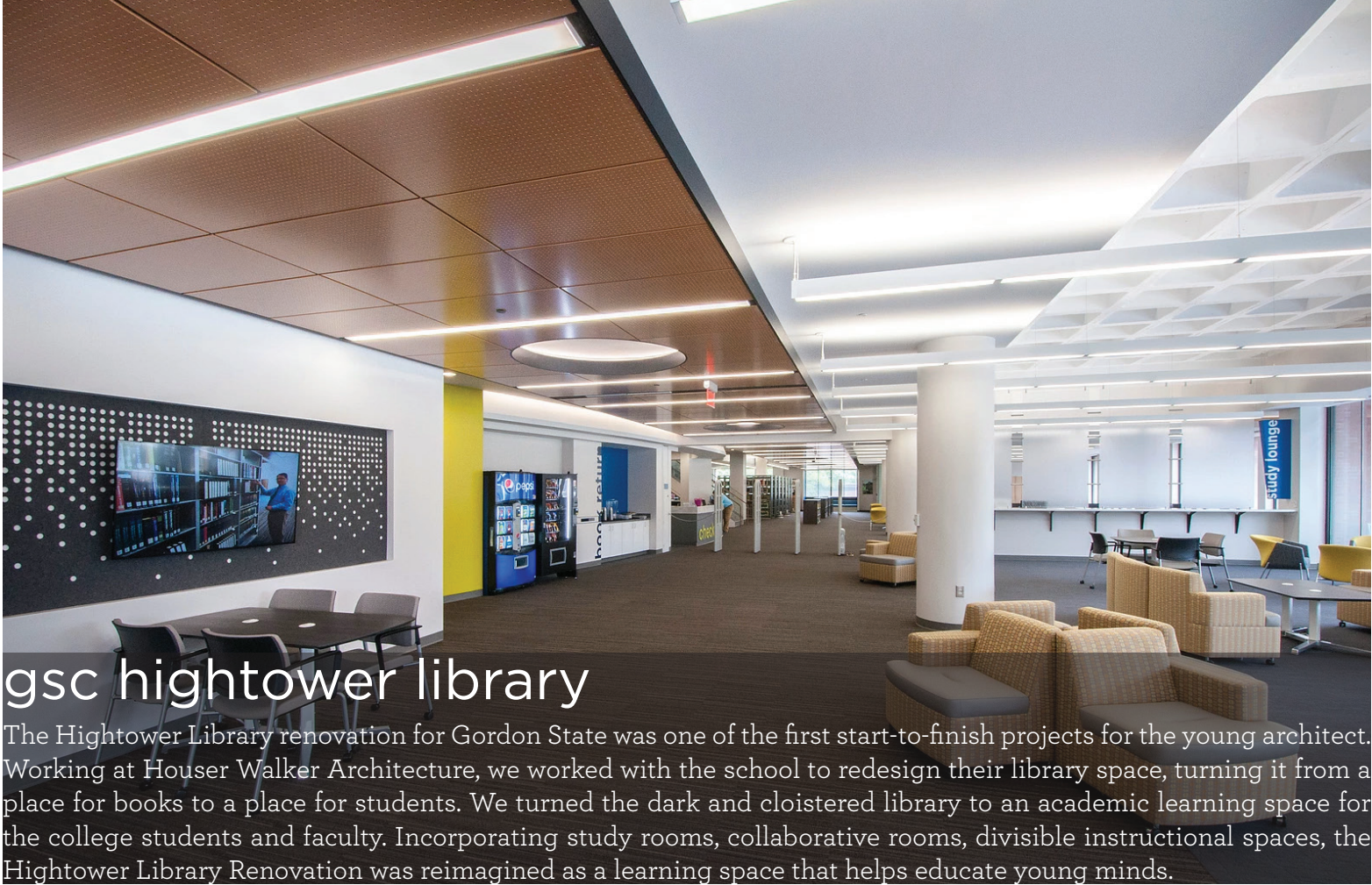
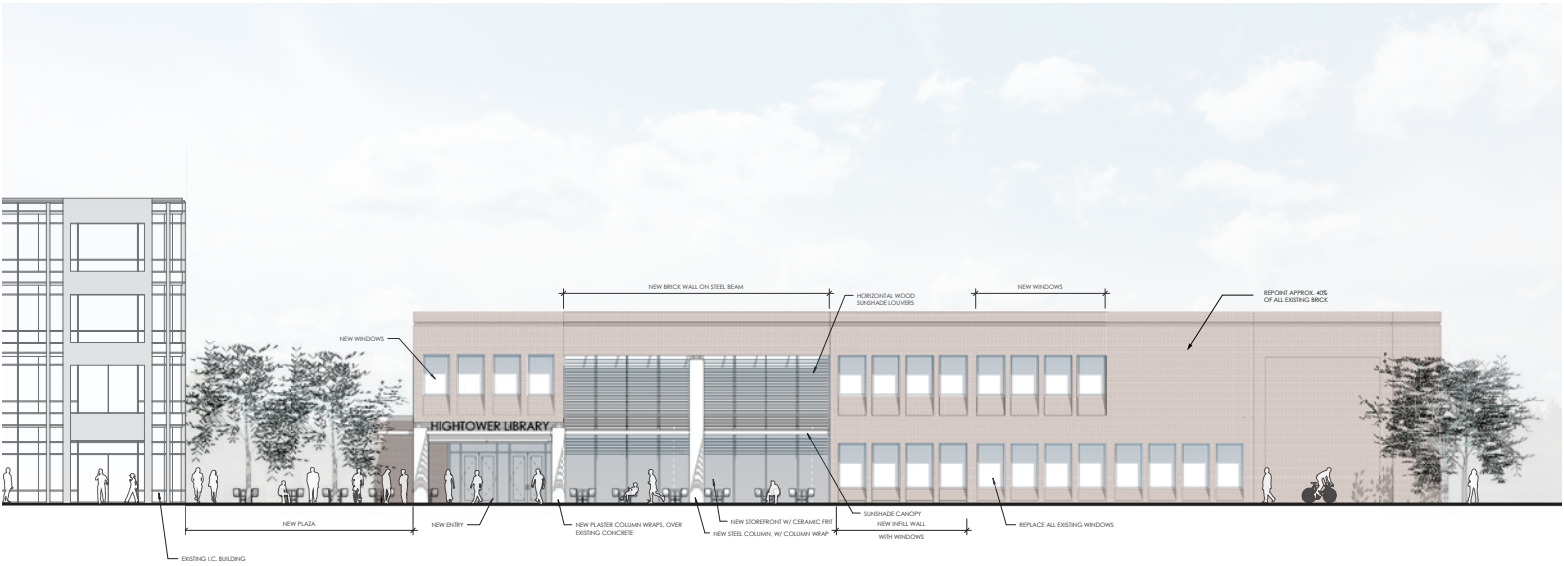
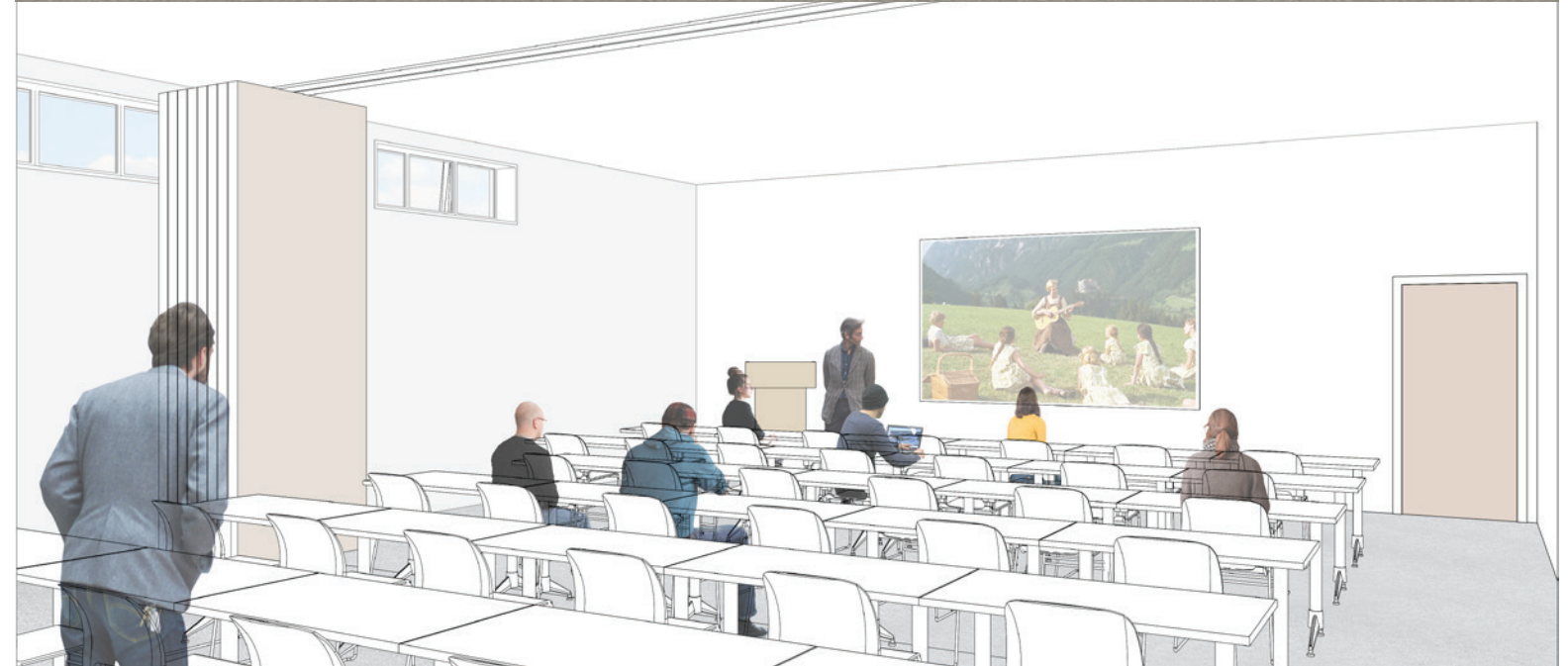




portfolio

chukwuemeka aligbe





st. james episcopal

The St. James Episcopal Church in Marietta, GA was seeking a masterplan design for capital improvements to their campus. The church reached out to Houser Walker to provide designs for renovated spaces at the campus including a new porte cochere at the vehicular entry, a renovated pedestrian entry along Church Street, as well as reconfigured classroom spaces and offices for the laypeople and the clergy. The overall schematic masterplan document produced serves as a guide for eventual fundraising and construction efforts for St. James in the coming years.

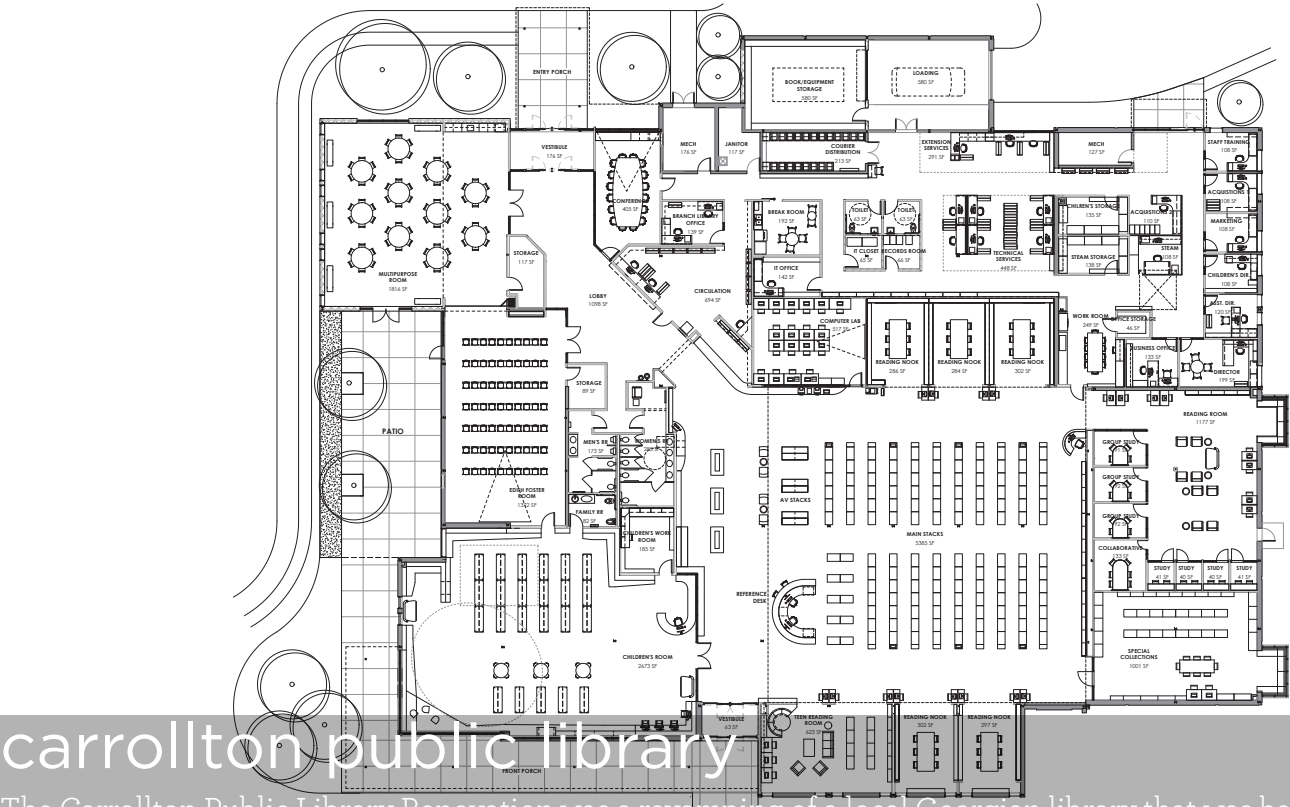




EAST ELEVATION FACING ROME STREET



SOUTH ELEVATION FACING SPRING STREET

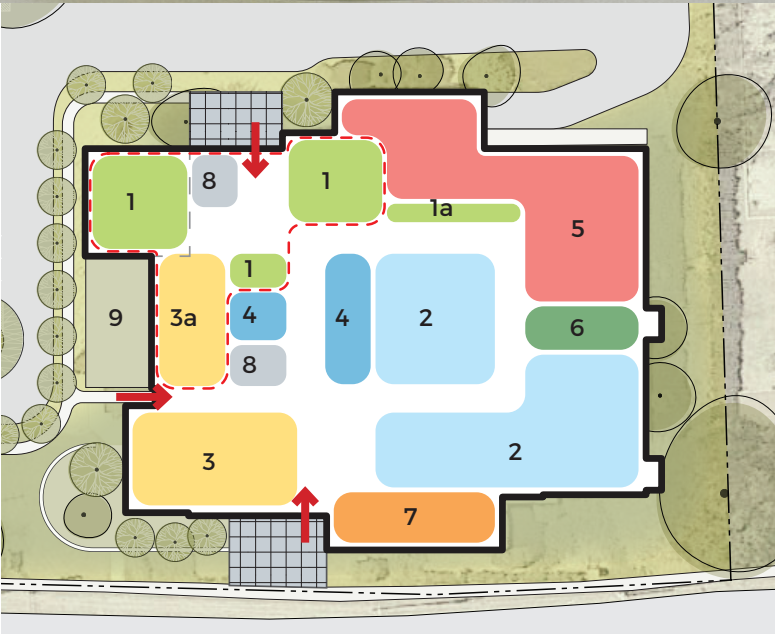


carrollton public library

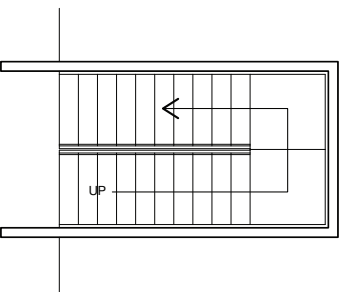
The Carrollton Public Library Renovation was a revamping of a local Georgian library that was barely renovated since its construction in 1960. The concept for the new interior revolved around a mix of open reading spaces, private study rooms, and meeting rooms to facilitate browsing, reading, and group activities for the varied patrons of the library. As the library also served as the regional headquarters for the library system, expanding existing space for regional services was paramount in the design.



EXISTING PLAN

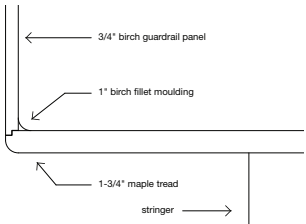


PROPOSED PLAN



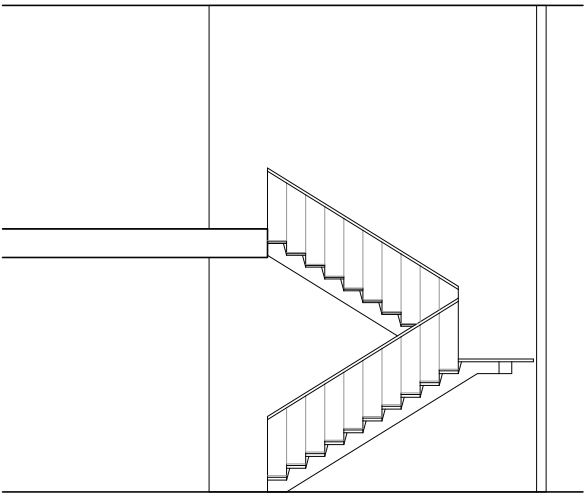
Stair Plan

1/4" = 1' - 0"



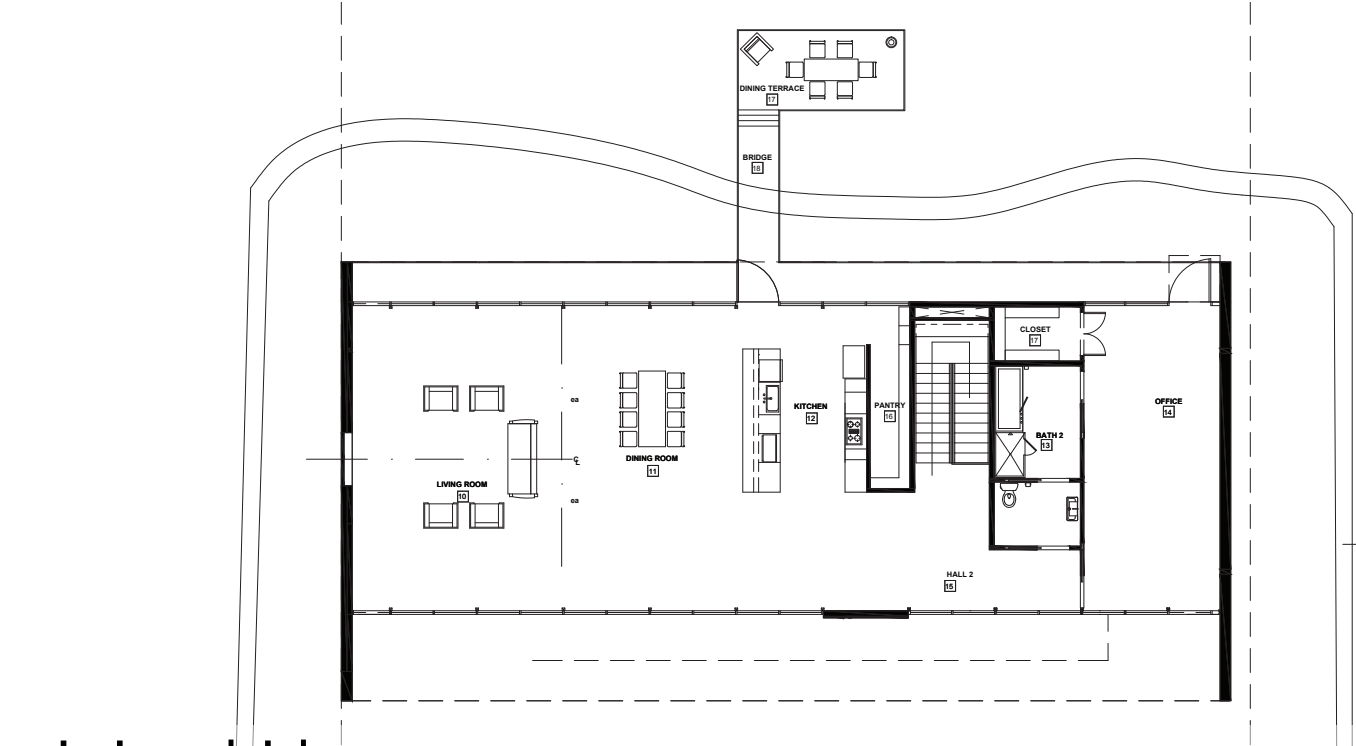
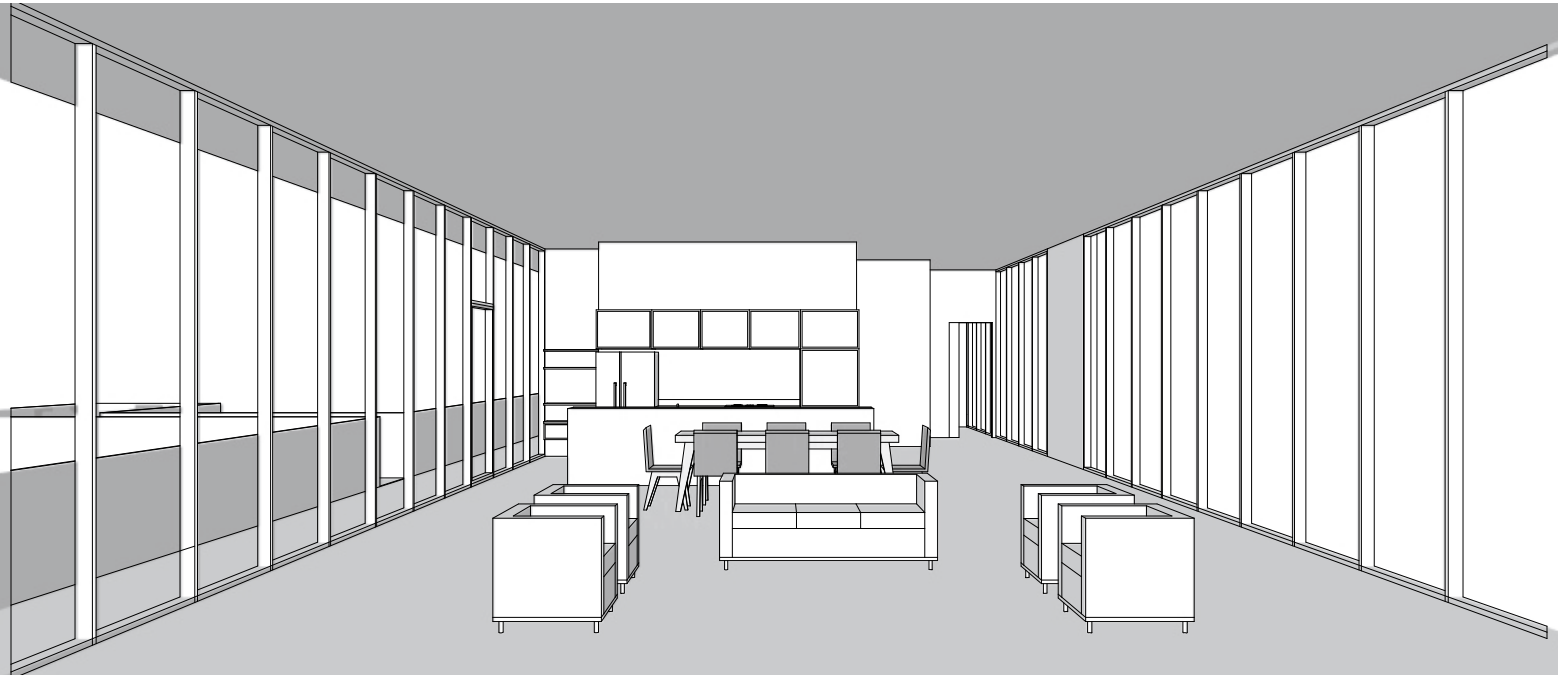
Stair Detail

1/4" = 1"



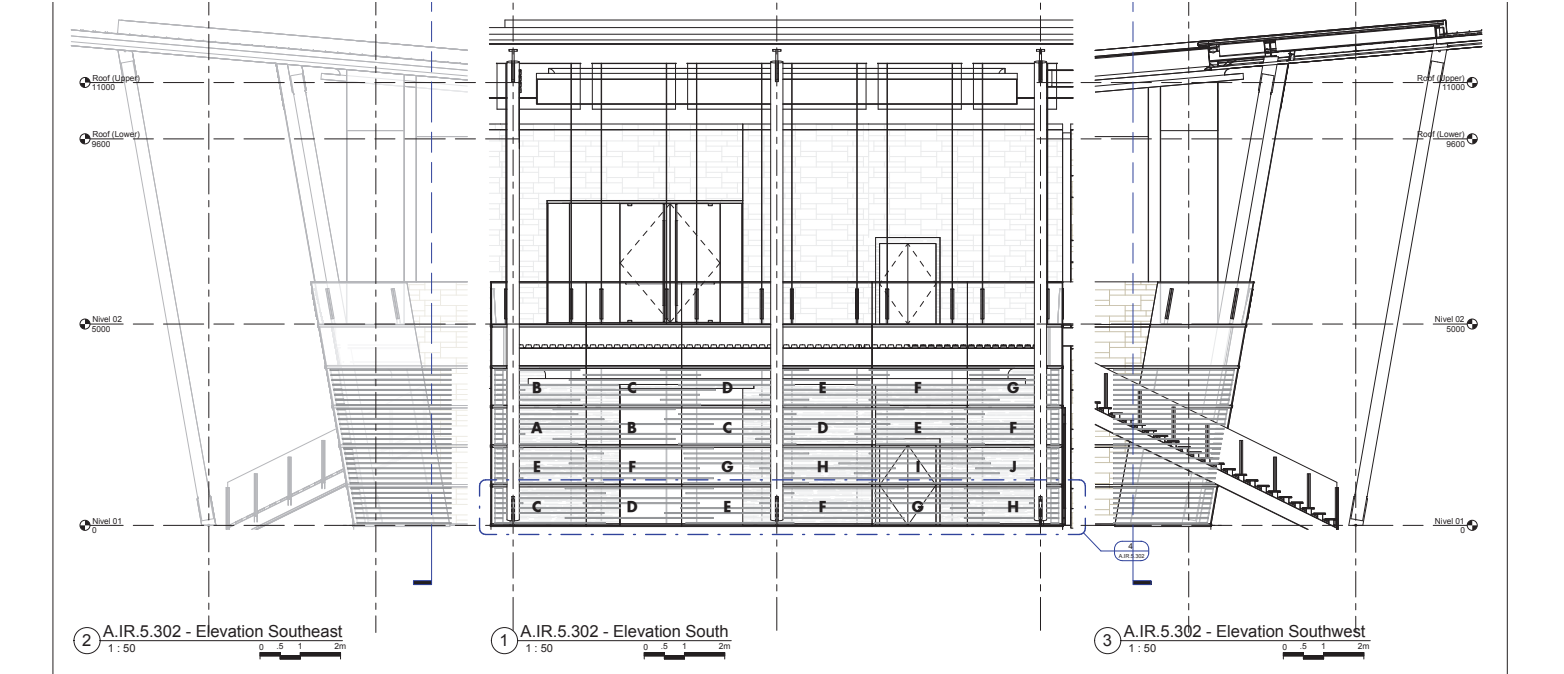
Stair Elevation

1/4" = 1' - 0"



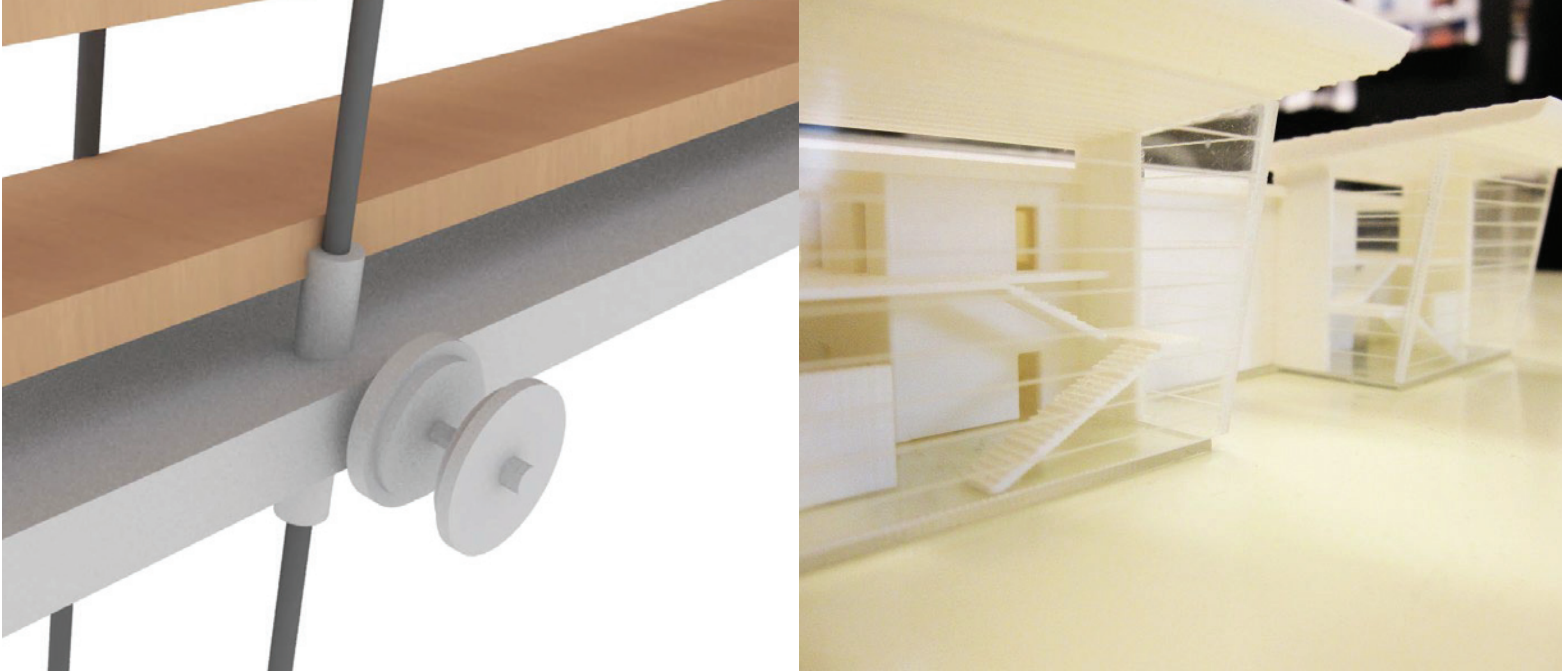
winiarski house

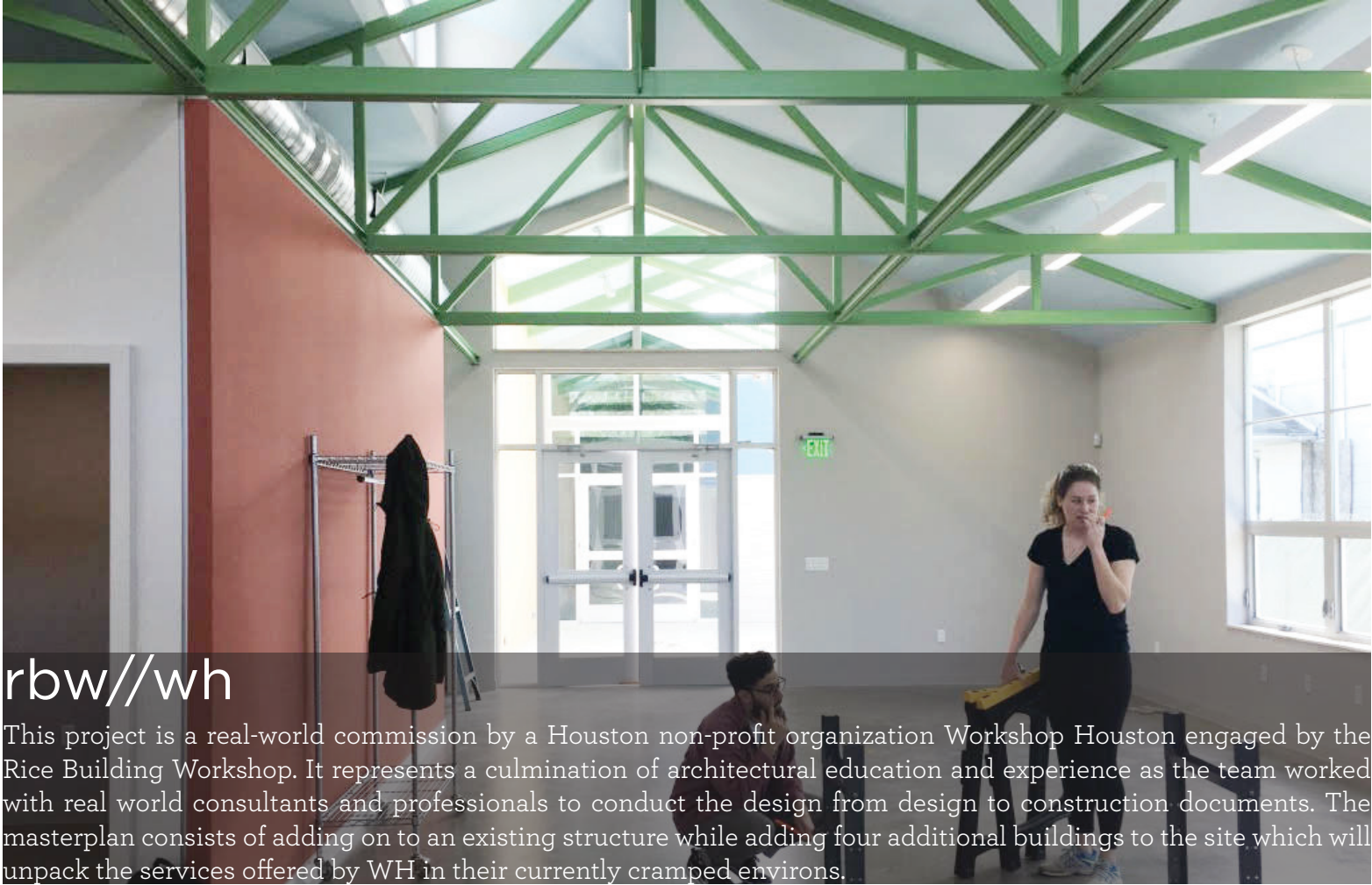
Working for a brief period at Lightroom Studio in Decatur, the Winiarski House represents an initial foray into residential architecture. While the project was in the design development phase, there were many details to resolve, including the facade and stair details. Nestled in a wooded Atlantan neighborhood, this was a residence for a professional couple and their children. The modern home featured ample entertaining space for the couple’s regular tango parties.



arboleda restaurant

The Arboleda Master Plan is a project undertaken during a yearlong preceptorship at Pelli Clarke Pelli Architects. Focusing on a specific part of the Monterrey-based master plan project, the Silica Restaurant Island is a feature piece in the design. The building combines two restaurants into a symmetrical unified space. The restaurant complex itself is situated in the center of the large masterplan project and features a detailed window system that uses a randomized slatting system.





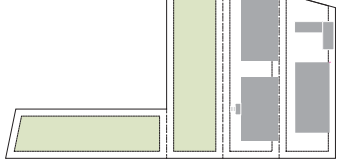
rbw//wh

This project is a real-world commission by a Houston non-profit organization Workshop Houston engaged by the Rice Building Workshop. It represents a culmination of architectural education and experience as the team worked with real world consultants and professionals to conduct the design from design to construction documents. The masterplan consists of adding on to an existing structure while adding four additional buildings to the site which will unpack the services offered by WH in their currently cramped environs.



Initial Conditions

Existing Buildings
Ground Lots



Unpacking Beat + Style

Existing Buildings
Ground Lots
Phase One + Chopper Renovations



Unpacking Scholar + Admin/HS

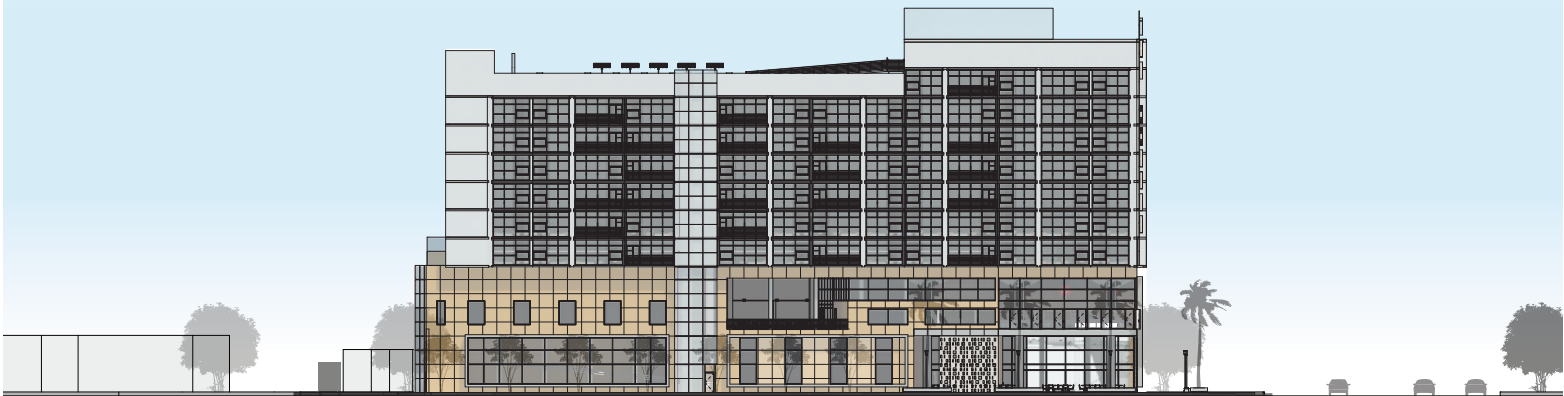
Existing Buildings
Phase Two + Chopper Roof



Campus Circulation

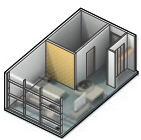
Final Phase Buildings
Campus Path
Garden
Outdoor Deck



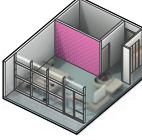


the corner hotel

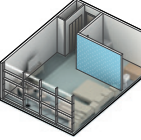
The Corner project seeks to produce a new form of user interaction in a much-traversed intersection of Houston. Taking advantage of the location and the activity already present, the articulation of the public space — the corner — is an imposition of a new phenomenon missing in Houstonian urbanism. The public space seeks to produce a new culture of leisure and pedestrianism in the affluent River Oaks area. The space can function as an agora, a spectacle, a market. The flexibility of this space allows the hotel to be more than an architectural icon in its location, an experience for locals and travellers alike.



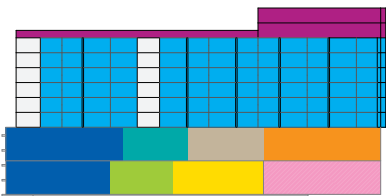
small
343 sq ft
deluxe room
business traveler



medium
390 sq ft
premium room
vacationer, resort goer



large
440 sq ft
executive room
families, conference/events

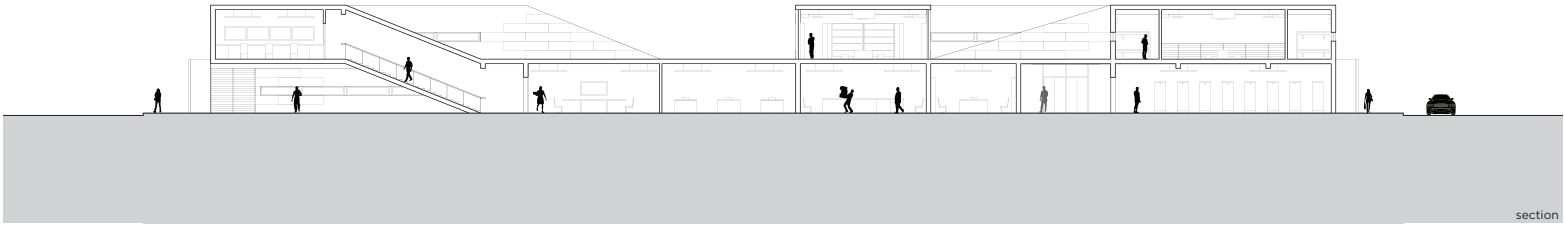
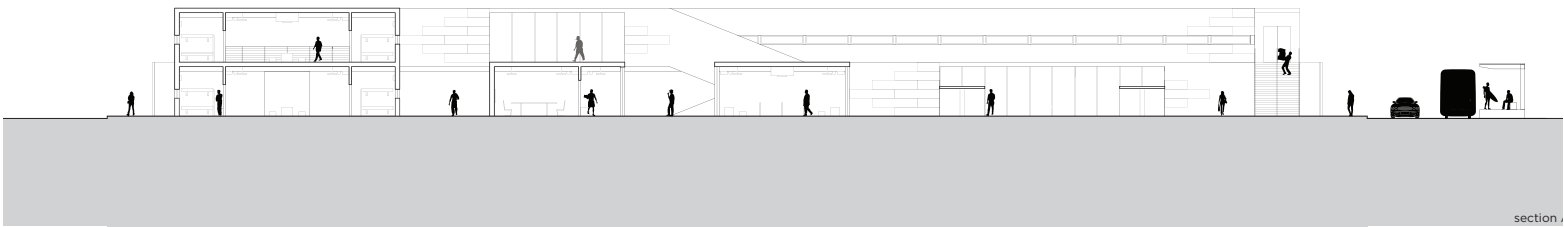
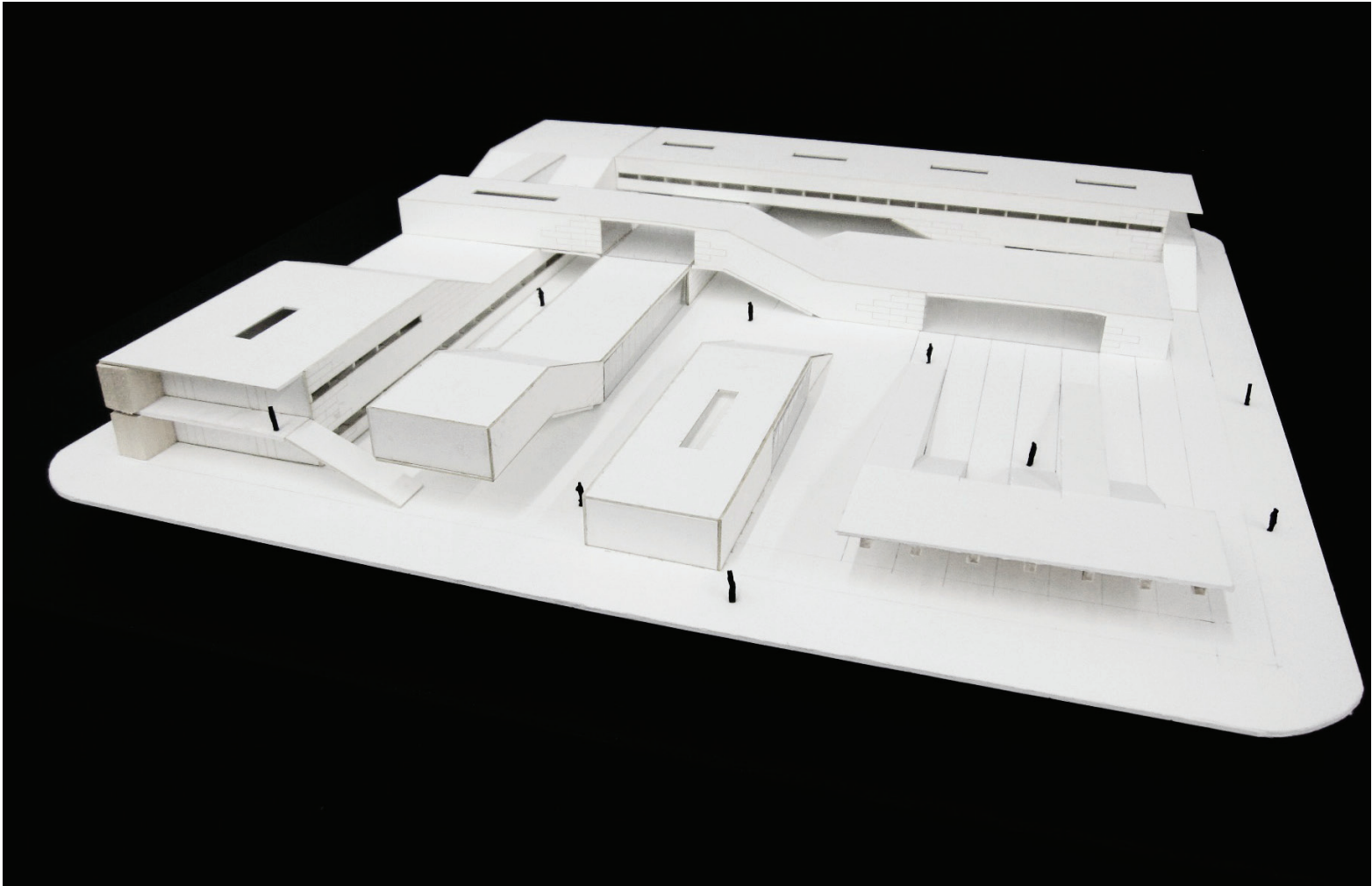


LEISURELY
Resort goers and vacationers
Using most hotel amenities
Spacious, convenient, desirable

GUESTS
Business and travel guests
Using most hotel amenities
Spacious, convenient, desirable

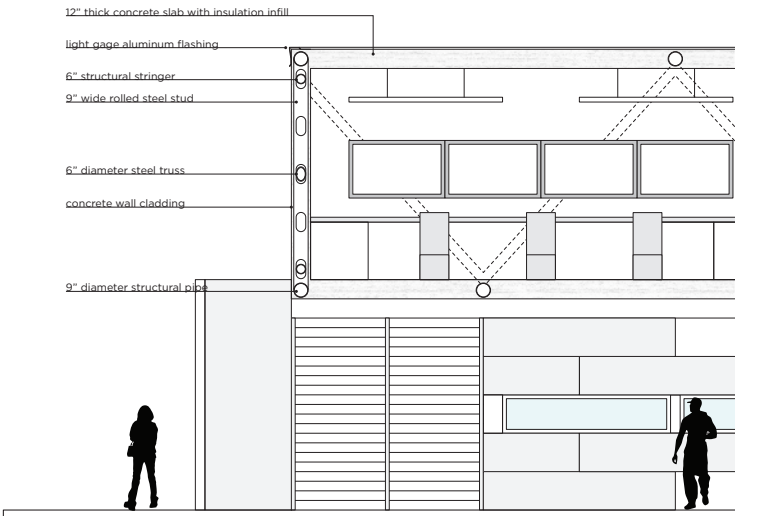
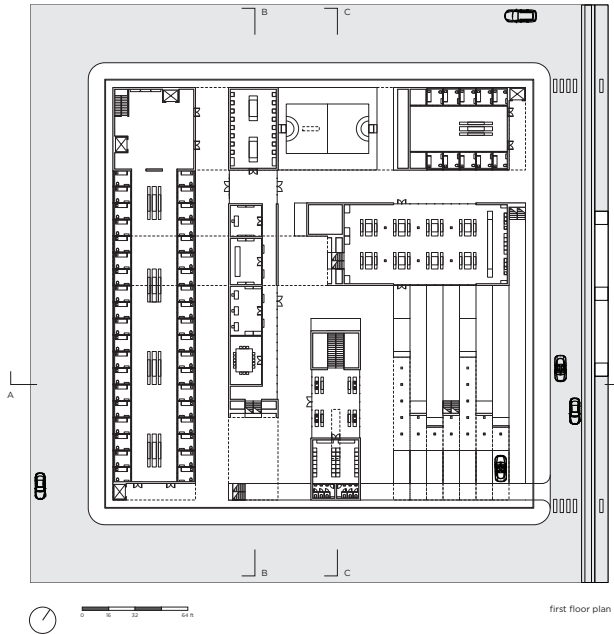
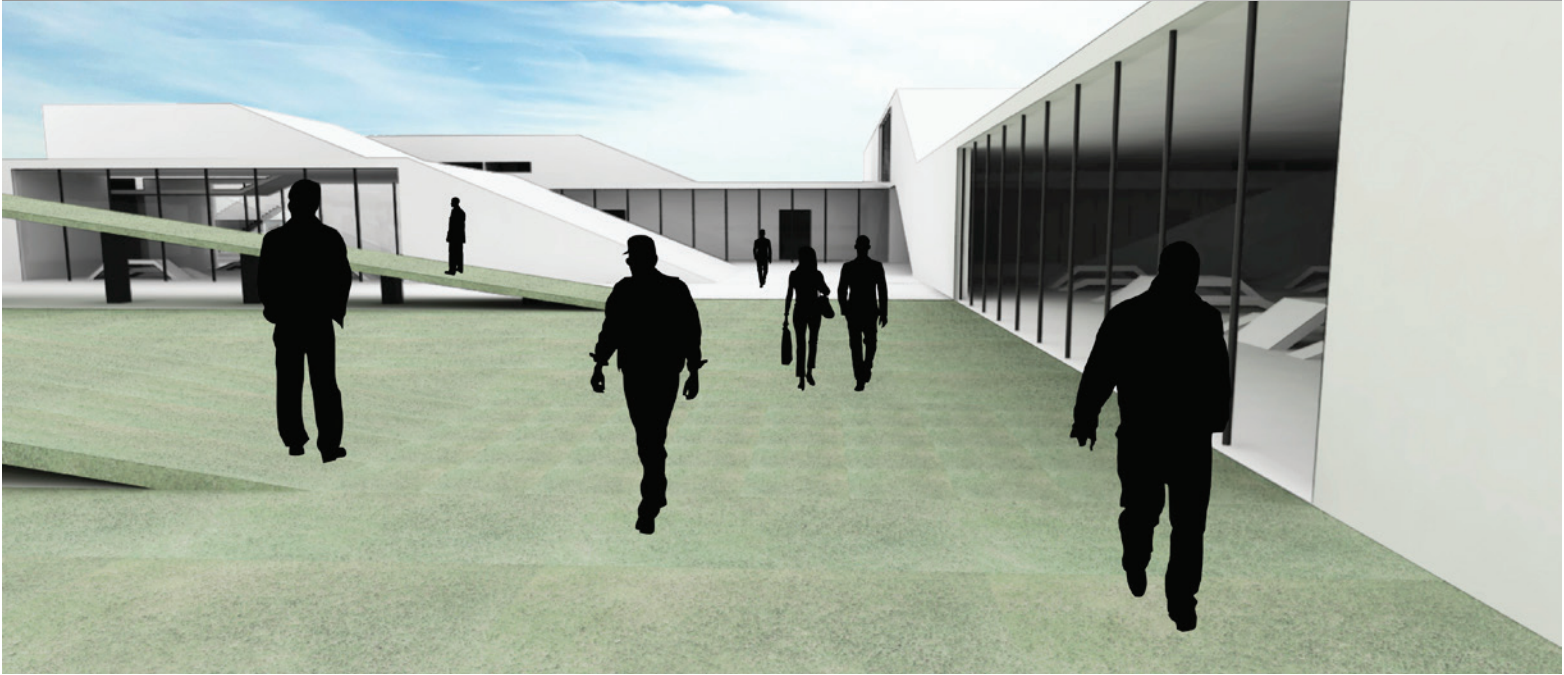
MAVENS
Local residents, families, friends
Using most hotel amenities
Spacious, convenient, desirable

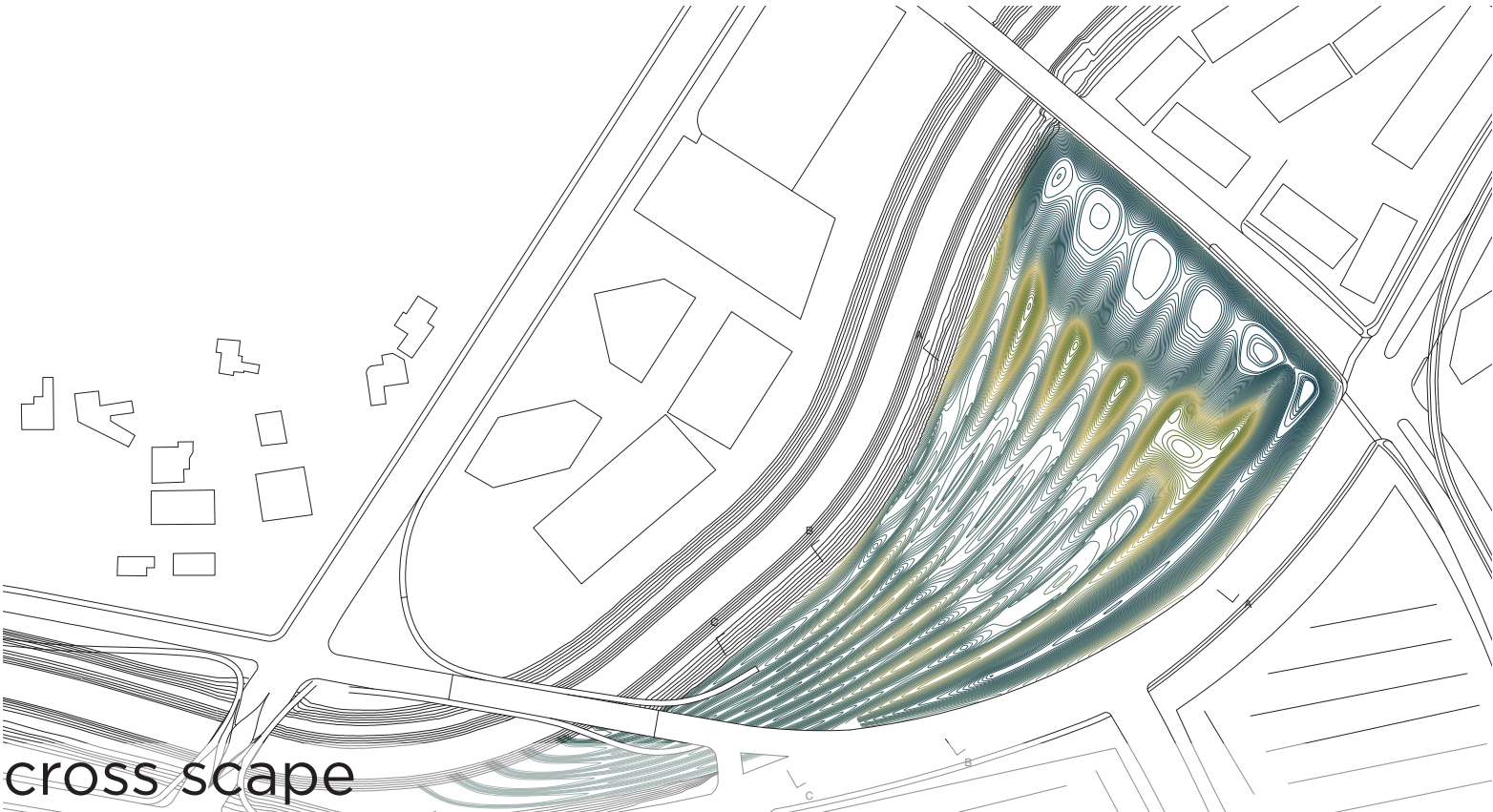
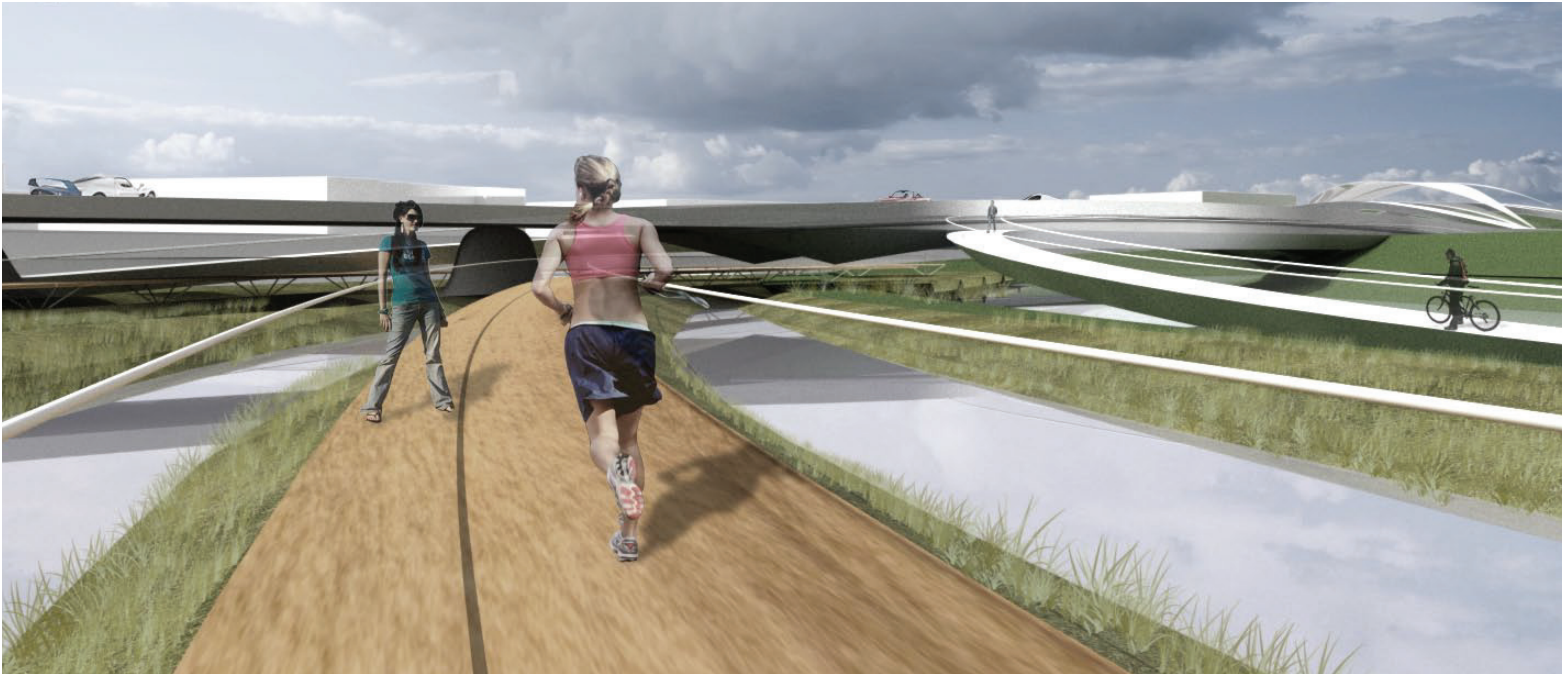
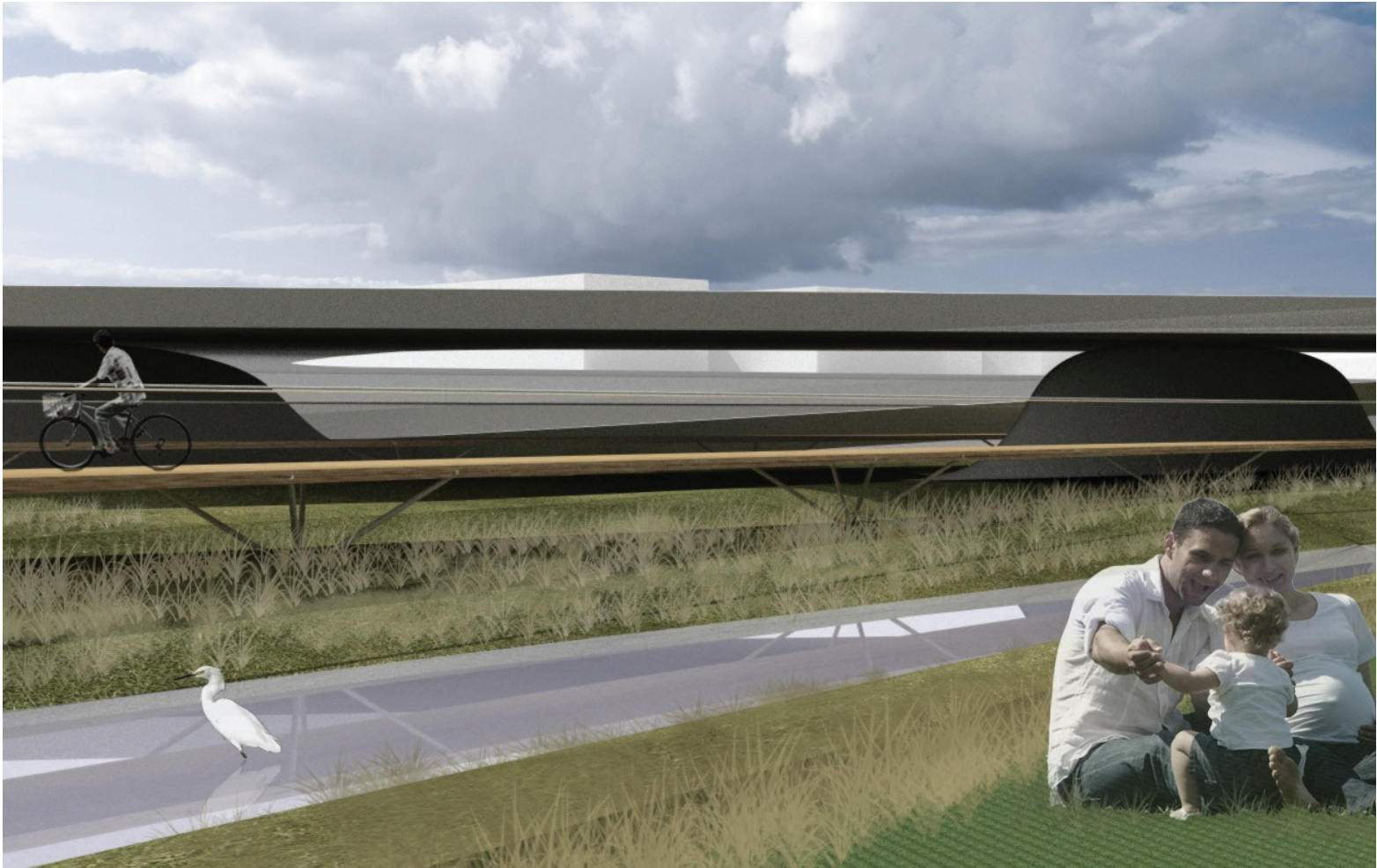
LOCALS
Local residents and businesses
Using most hotel amenities
Spacious, convenient, desirable



mikrokosmos

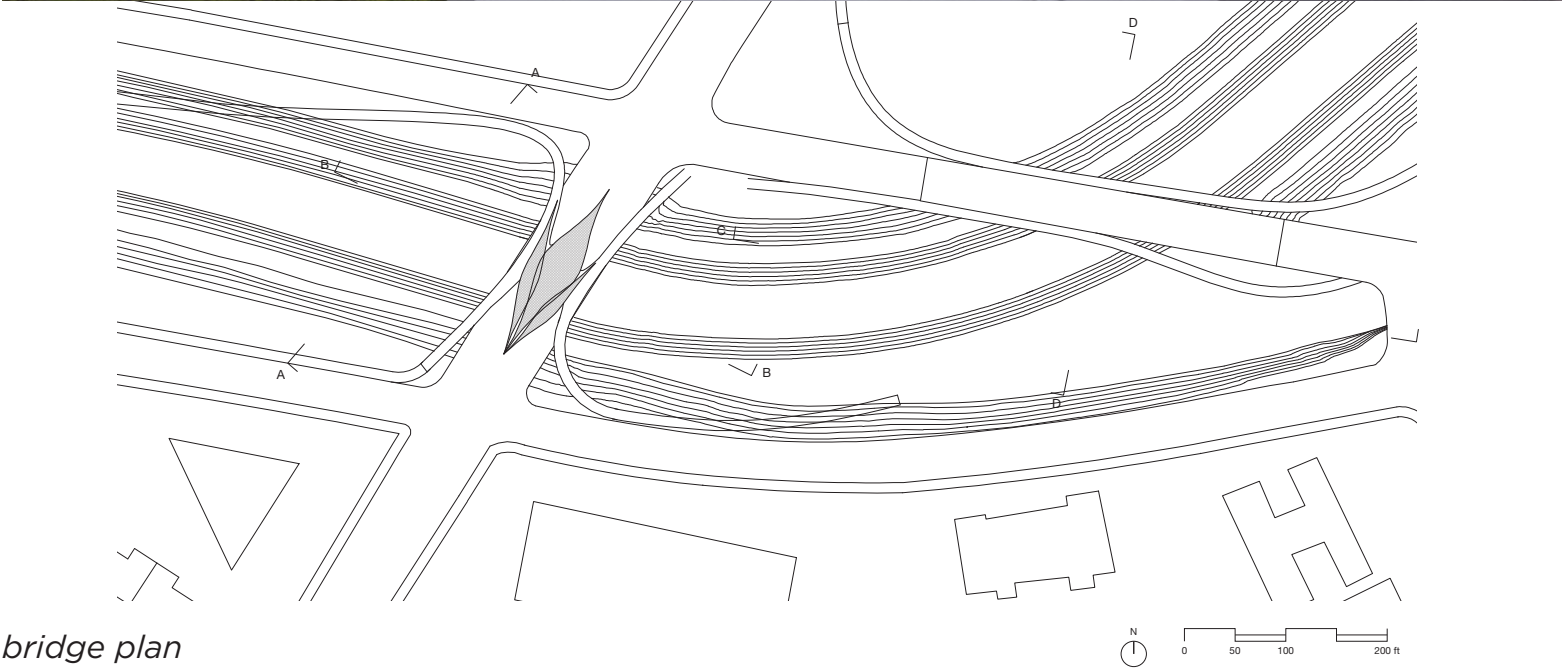
A unique architectural project — the prison — required a unique architectural solution: the microcosm. In order to place prisoners within the city and rehabilitate them successfully, the standard model of a prison cannot work. Studying the functioning of a city to shrink society into the size of a city block was key to generating a utilitarian prison that reflected the real world.



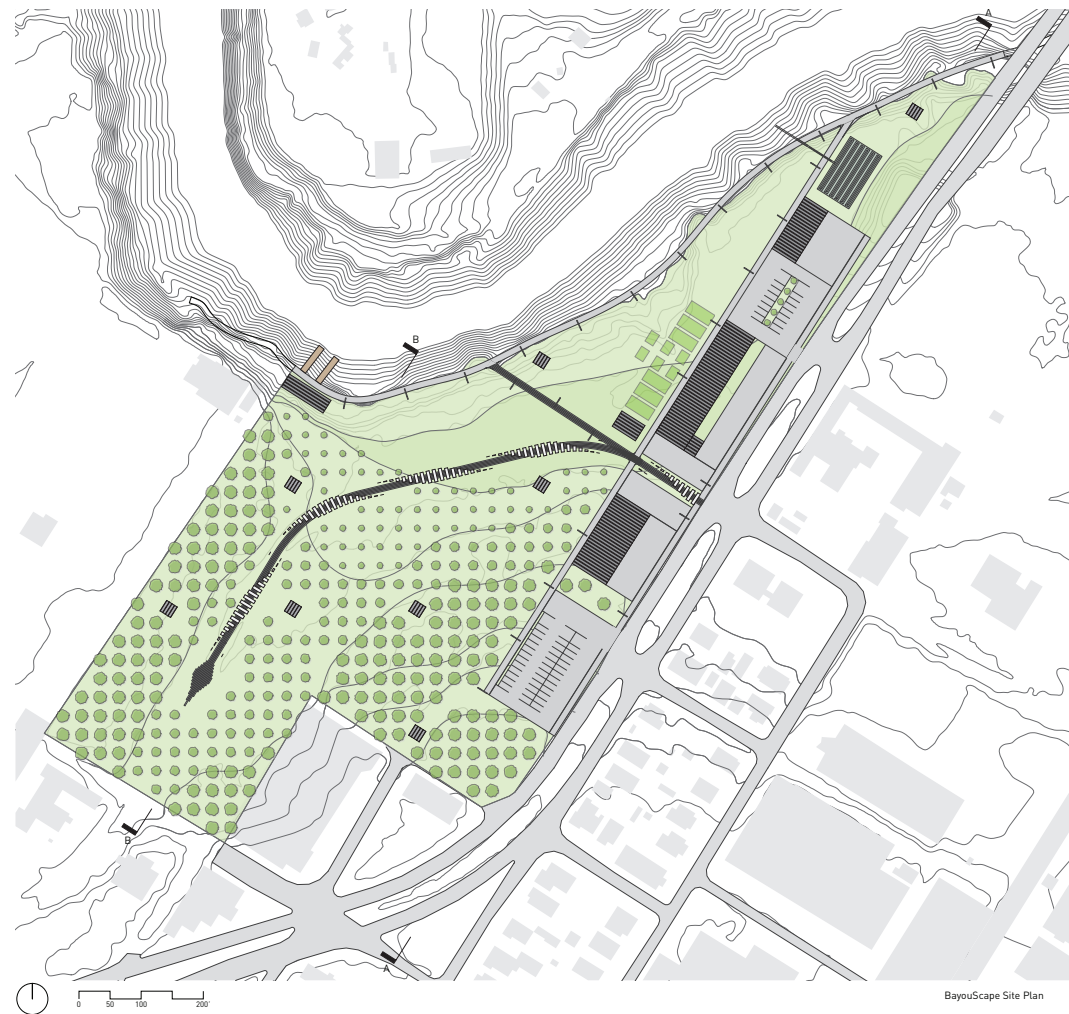


cross scape

No study of Houston's hydrology would be complete without the design of a hydraulic landscape. The function of the parametrically designed landscape in Houston's medical center would be to collect runoff from a nearby parking lot and naturally purify the water to return into the bayou system. The retention system, with detention ponds and friction based purification chanel, would also serve as a public gathering space for the people.

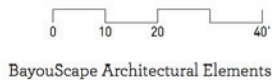
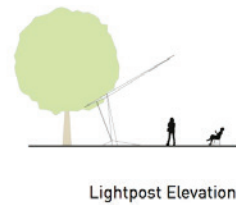
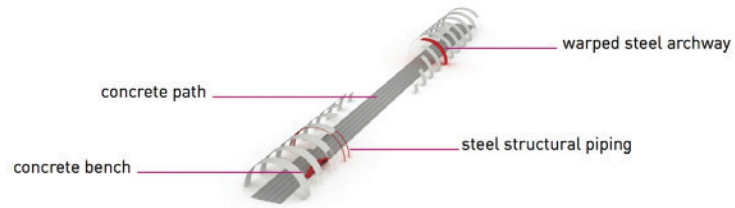
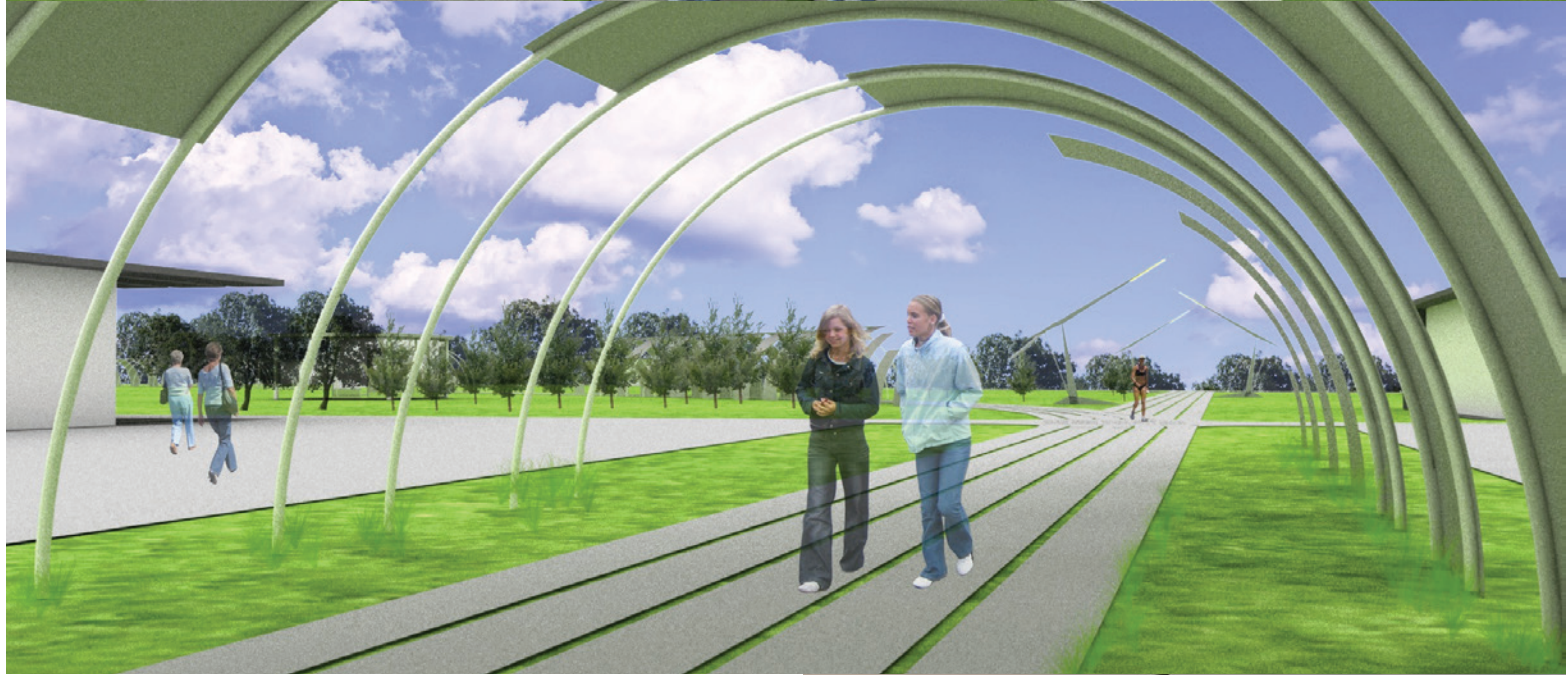
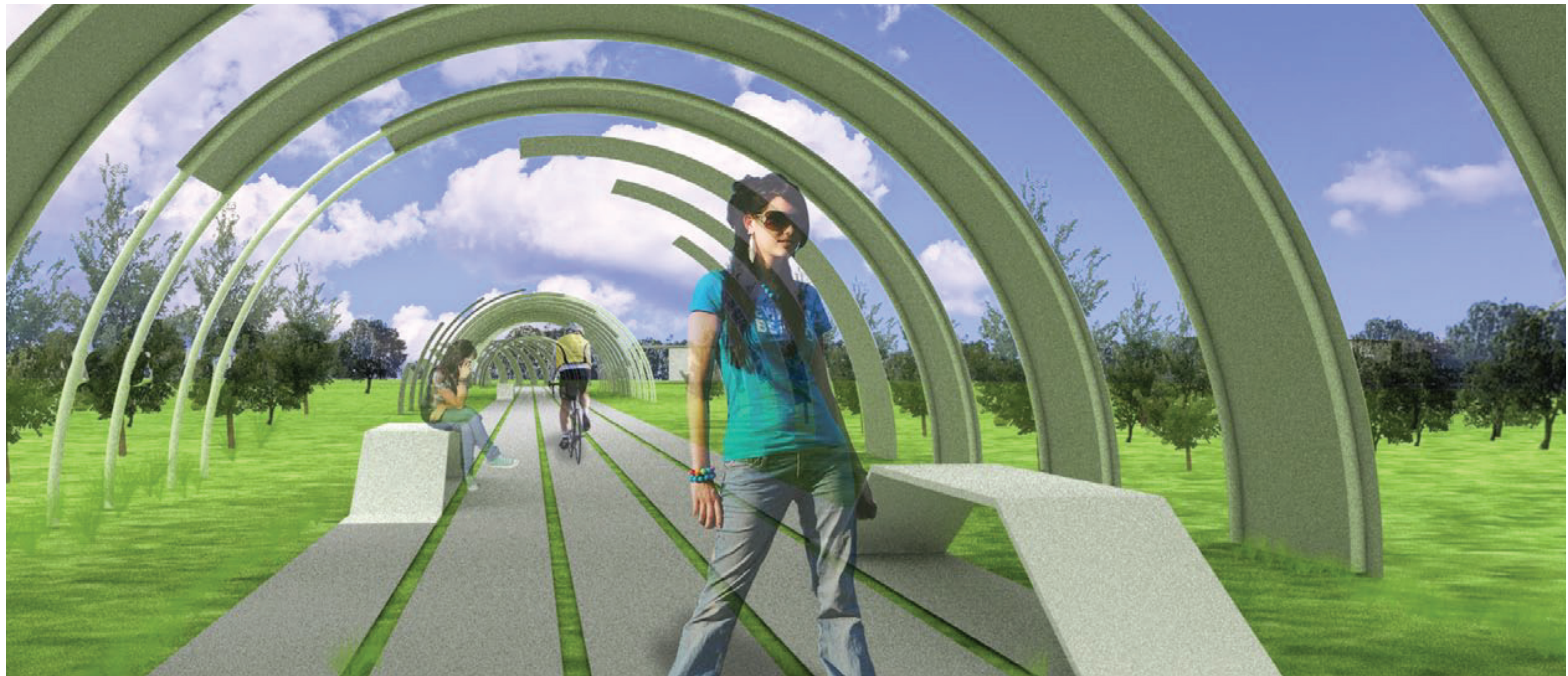


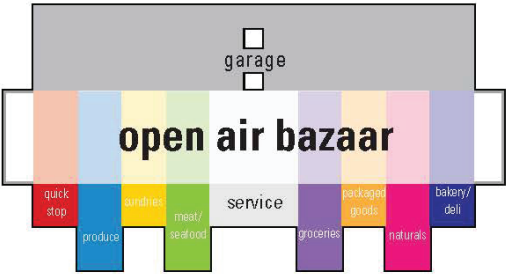
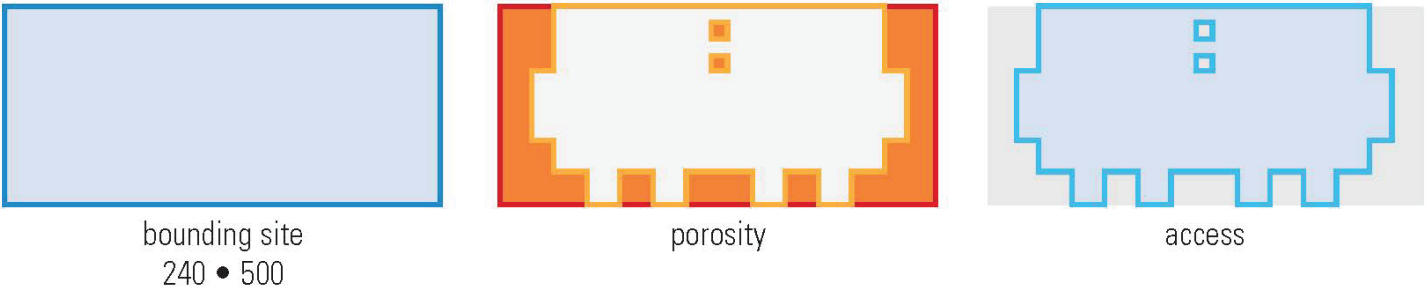
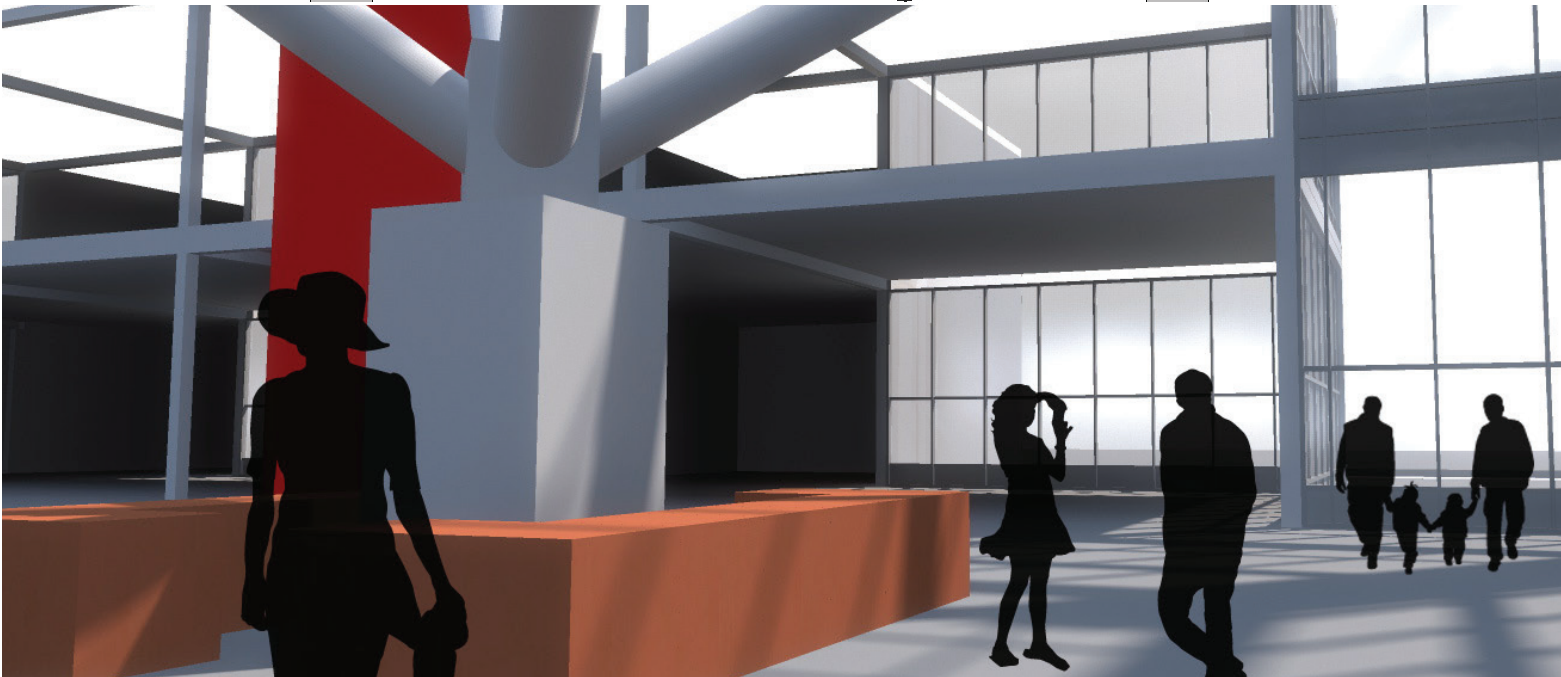
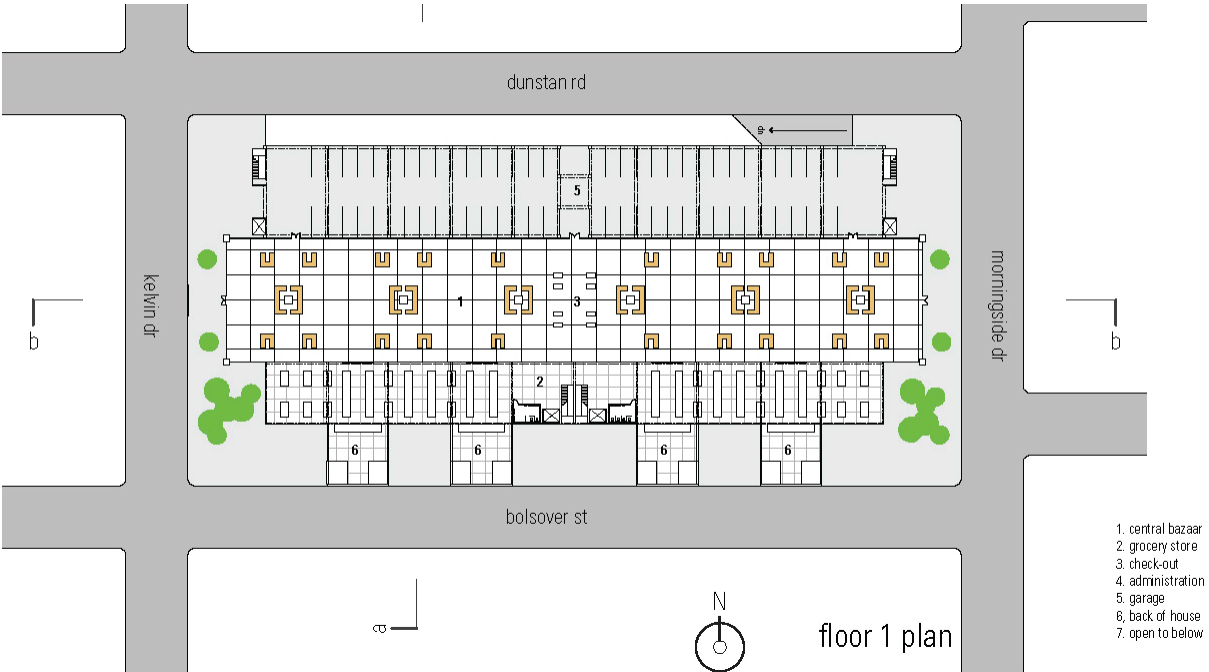
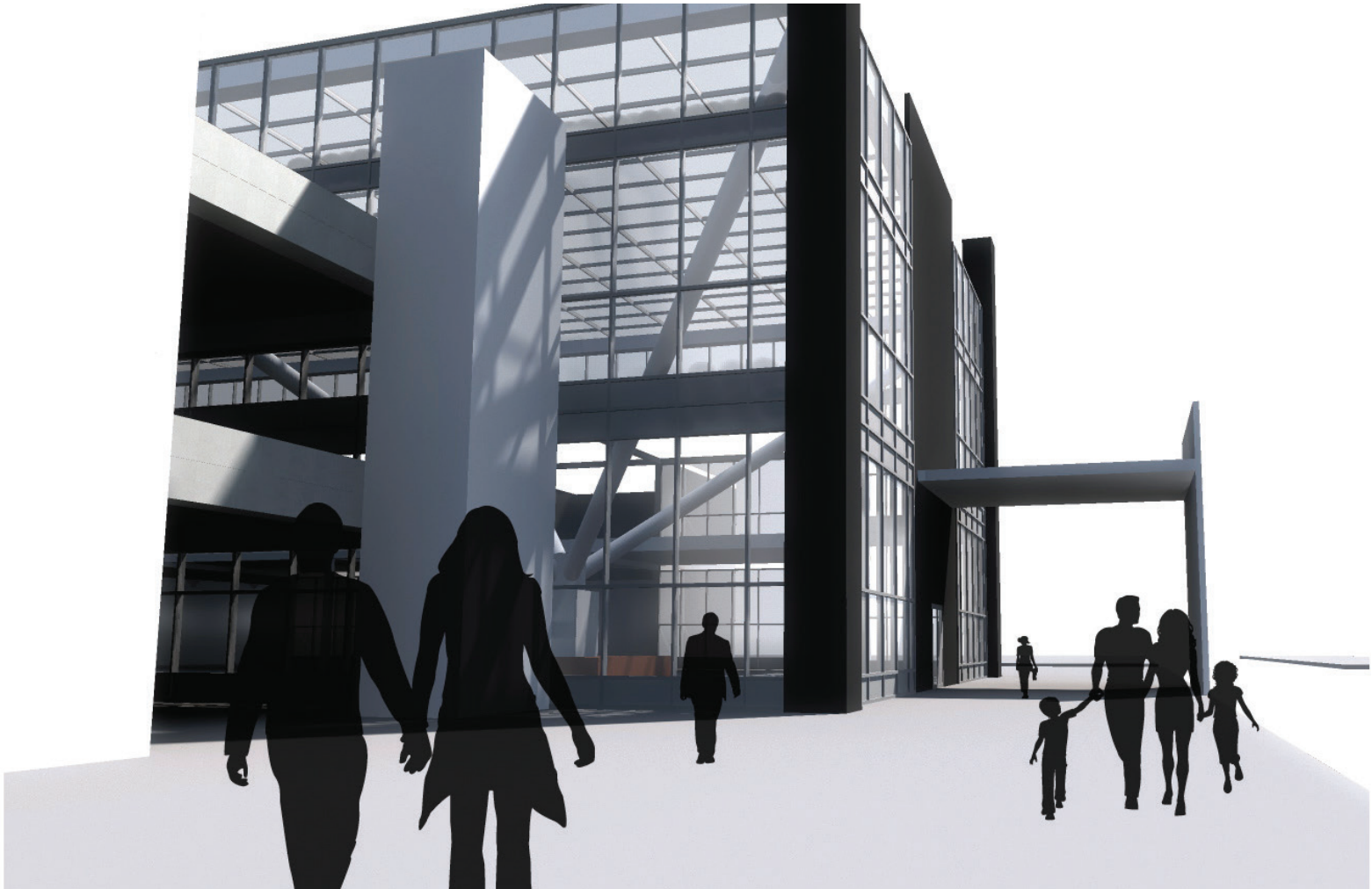
bridge plan



bayouscape

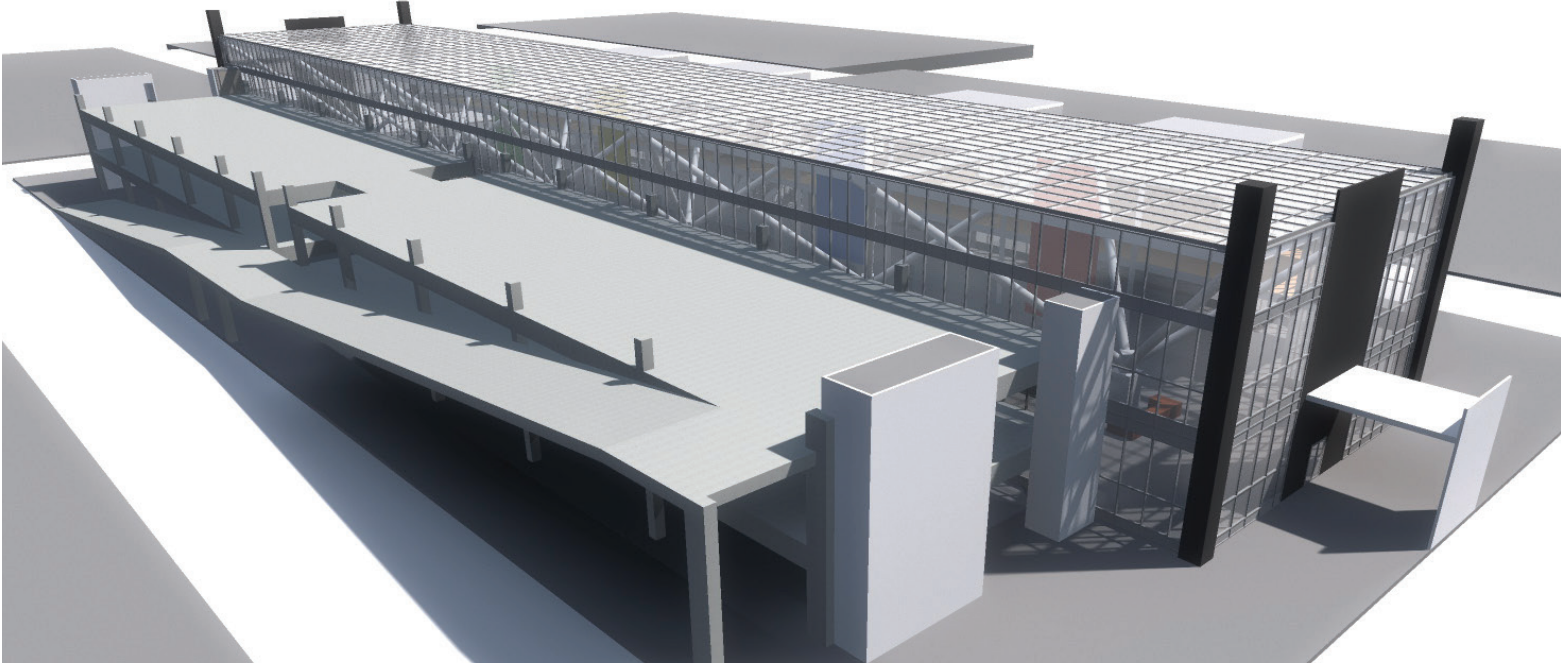
With the practicum of landscape architecture under the young architect's belt, one can tackle the concept of a bayou-side park. This 11-acre project, repurposing an old train yard for a new urban park and bayou research center, features the fusion of landscape urbanism and modern architecture, a space useful for all who live in this northern Houston neighborhood and all Houstonians who wish to visit.

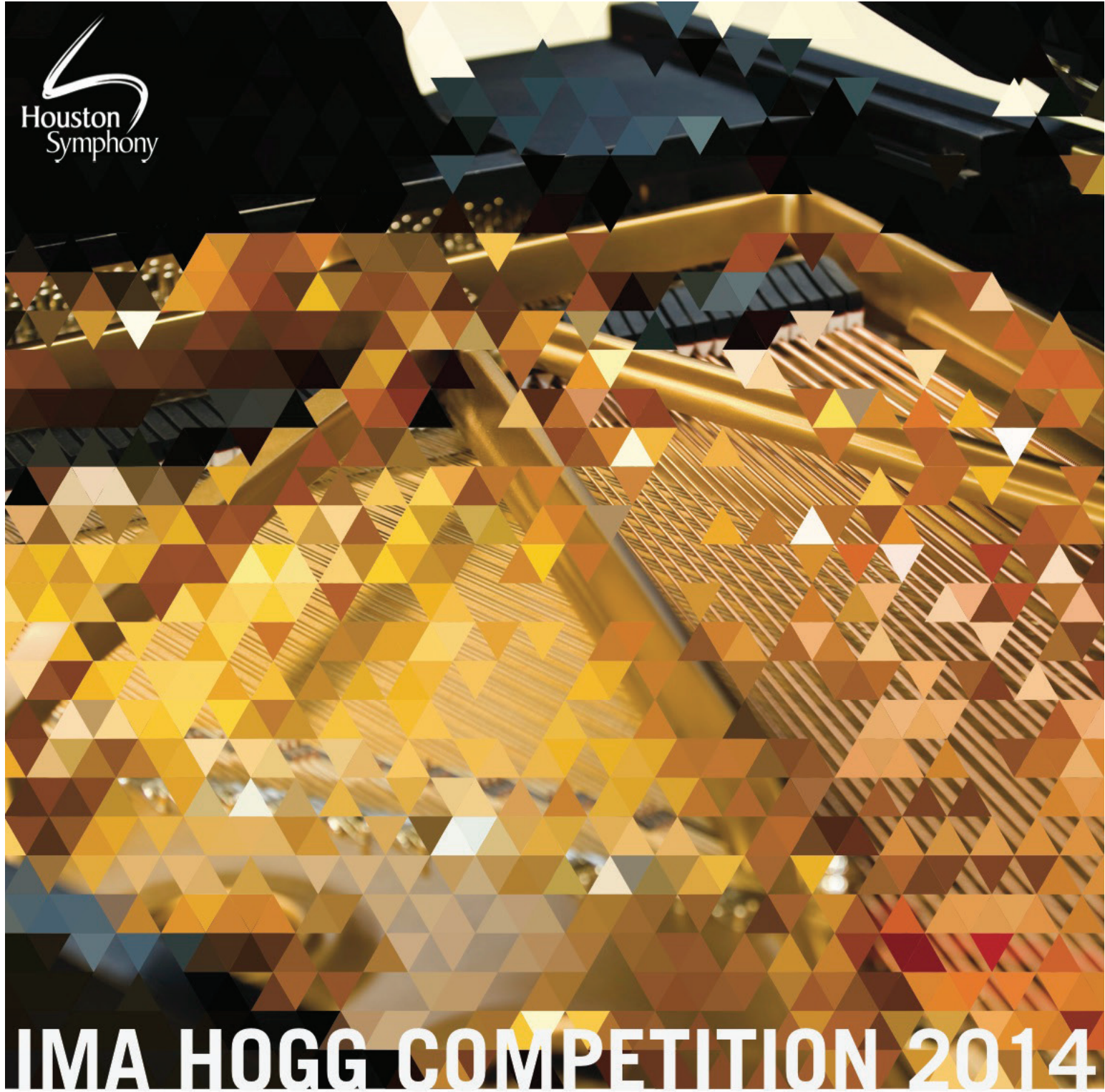




greengrocer808

The supermarket exists as architectural hinterland, a realm that has been designed to the point of efficiency. The exercise of the architecturalized grocery store brings about new thought dealing with the true utility of the supermarket. Greengrocer808 functions as a modern-day agora, fusing the American supermarket with the bazaar and farmer's market typical of countries in the Global South. This is the redefined grocery store.





INSTRUMENTAL COMPETITION

Sponsored by the Houston Symphony League
Helen Shaffer, *Competition Chair*
Jennifer Gravenor, *Competition Chair-Elect*
Charlotte A. Rothwell, *Chair Emeritus*

NEW INCREASED PRIZES

First Place: \$25,000
Performance with the Houston Symphony at Jones Hall
Second Place: \$10,000
Performance with the Houston Symphony at Miller Outdoor Theatre
Third Place: \$5,000
Fourth Place: \$1,000
Audience Choice: \$1,000
Artistic Encouragement: \$1,000

Flights and accommodations will be provided by the Houston Symphony. For specific information, please visit our website.

CONTACT INFORMATION

Phone: 713.238.1447
Fax: 713.224.0453
Email: MusicMatters@houstonsymphony.org

To download competition materials, go to <http://www.houstonsymphony.org/Education-Community/Aspiring-Musicians/Competitions/Ima-Hogg-Competition>

ima hogg competition poster

For the Ima Hogg Youth Competition, the Houston Symphony held a competition for the poster design to advertise the musical event. These designs represent the winning designs for the poster competition. The designs were awarded the first prize and both used in to advertise the competition. These show the confluence of design thinking across disciplines -- architectural, graphic, digital, and parametric -- in creating winning design.



2014 IMA HOGG COMPETITION

INSTRUMENTAL COMPETITION

Sponsored by the Houston Symphony League
Helen Shaffer, *Competition Chair*
Jennifer Gravenor, *Competition Chair-Elect*
Charlotte A. Rothwell, *Chair Emeritus*

DATES & TIMES

Semi-finals: Thursday, May 29, 2014, 9 AM
Finals: Saturday, May 31, 2014, 7 PM
The Finals will be performed with the Houston Symphony

NEW INCREASED PRIZES

First Place: \$25,000
Performance with the Houston Symphony at Jones Hall
Second Place: \$10,000
Performance with the Houston Symphony at Miller Outdoor Theatre
Third Place: \$5,000
Fourth Place: \$1,000
Audience Choice: \$1,000
Artistic Encouragement: \$1,000

Flights and accommodations will be provided by the Houston Symphony. For specific information, please visit our website.

CONTACT INFORMATION

Phone: 713.238.1447
Fax: 713.224.0453
Email: MusicMatters@houstonsymphony.org

To download competition materials, go to <http://www.houstonsymphony.org/Education-Community/Aspiring-Musicians/Competitions/Ima-Hogg-Competition>



RAMP KICKOFF PARTY

SEPTEMBER 20, 2012 7:30 PM [AFTER THE LECTURE]

IF YOU WANT TO KNOW WHAT **RAMP** IS...

The Rice Architecture Mentoring Program was started in 2010 as a program to build relationships with RSA alumni and current students. The program facilitates not only mentorship arrangements between students and alumni, but organizes office and building tours, lecture panels, workshops and meet-and-greet events. RAMP help RSA students take advantage of the wealth of experience gained by alumni working over the years. To get involved with the program, you can take a student or alumni survey provided online. Get on the RAMP today.

